

Installation Guide

Welcome to Antenna Magus! If you are having trouble with the installation of Antenna Magus, or would like any further information, please feel free to contact a reseller. A list of resellers is maintained on our website at www.antennamagus.com.

We are interested in hearing your feedback on everything, but especially:

1. Licensing and Pricing
2. User interface
3. Antennas. Specifically, if you have ideas for antennas or information to include in Antenna Magus, please send it through.

Hardware

Antenna Magus has been designed for use on standard 32 or 64-bit PC hardware running Windows XP (SP1 or later), Windows Server 2003, Windows Vista or Windows 7. For Node-locked licencing, no network connectivity is required, but the licencing procedure is simplified by allowing Antenna Magus to connect to the internet.

For floating licence use, all machines that are to use the floating licence must be connected to the same local-area-network as the floating licence server machine while Antenna Magus is open. If the client machines loose network connectivity to the floating licence server for more than a few minutes, Antenna Magus will give an error and cease operation until the connection is restored.

Installation

Note that the Antenna Magus installation requires that a user with administration rights executes the installation.

If you do not have Microsoft .NET Framework 3.5 SP1 installed, you must install it before you can install Antenna Magus. For installation in a floating licence network, the .NET framework is not required on the server that will host the floating license server, only on machines that will host the client application.

.Net 3.5 SP1 is available from Microsoft at:

<http://www.microsoft.com/downloads/details.aspx?FamilyId=AB99342F-5D1A-413D-8319-81DA479AB0D7&displaylang=en>

Alternatively, a link to the download is available at www.antennamagus.com.

Note:

- The installation of the .NET Framework is VERY slow – it has been known to take up to half an hour and longer.

- Lack of progress feedback can make it look like the installation has stopped responding, when in fact it hasn't.
- Installation of the .NET Framework may require a reboot.

Evaluation version

The Evaluation version of Antenna Magus requires no licence keys or registration for installation. The installation executable is named 'Antenna-Magus(Evaluation).exe'. This file should be copied to a local folder and executed, or the 'setup.exe' file on the Antenna Magus Evaluation DVD should be executed.

When running the Evaluation version, you will only be able to work with a very small subset of the antennas that are available in the licensed version of the product. All the features of the licensed product can be used with the antennas that are active in the Evaluation version. The number of design algorithms in the Array Synthesis tool is restricted, as is size of the array that can be imported. To get access to the full database and the full array synthesis tool, please contact a reseller to purchase Antenna Magus.

The Evaluation version expires periodically. The expiry date of the Evaluation version is displayed in the title bar of the application window. If the version you have has expired, please visit www.antennamagus.com for the latest version, or ask your Antenna Magus reseller for a new installation DVD.

Classroom version

The Classroom version of Antenna Magus is installed in exactly the same manner as the Professional version (discussed below). The installation key used for the Classroom version is a 20-digit key (whereas the Professional version uses a 15-digit key). A Classroom installation key can be used for installation on a number of machines up to the maximum of the number of seats allocated for the Classroom licence. Once installation has been completed on the maximum number of machines, the key will cease to work. In order to change the machines on which the Classroom installation is installed, please contact your Antenna Magus reseller.

Professional version

In order to install Antenna Magus Professional for the first time you must have the installation files and a 15 digit licence key. The licence key should have been supplied to you by your reseller. If you are not in possession of this key, please contact your reseller – you cannot proceed without it.

Node-locked installation of Antenna Magus on a machine with an internet connection (recommended)

To install Antenna Magus with an internet connection, simply run the installation and follow the on screen prompts. When prompted to do so, select the 'Automatically retrieve licence for node-locked installation' option. You will be prompted to enter your 15-digit licence key. The installation will send your key together with your hardware serial numbers to the Antenna Magus server. The server will

respond with the required licence file for the installation process to continue. If you experience trouble with this step, please refer to the section on installation without an internet connection.

What information does the installation send to the server?

Antenna Magus is licensed for use on a single desktop PC and each licence is linked to a unique set of hardware serial numbers. The installation sends the licence key and the serial numbers of the machine to the licence server, so that a licence can be created for the machine. This information does not contain anything that can be used to identify you; it only contains data about your operating system and hardware. (If you would like to see the information that is being sent, select the 'Manual' option during the installation process. The content that you would need to send to your reseller is exactly the same content that is sent to the server by the automatic licence retrieval mechanism.)

Node-locked installation of Antenna Magus on a machine without an internet connection (manual installation - not recommended)

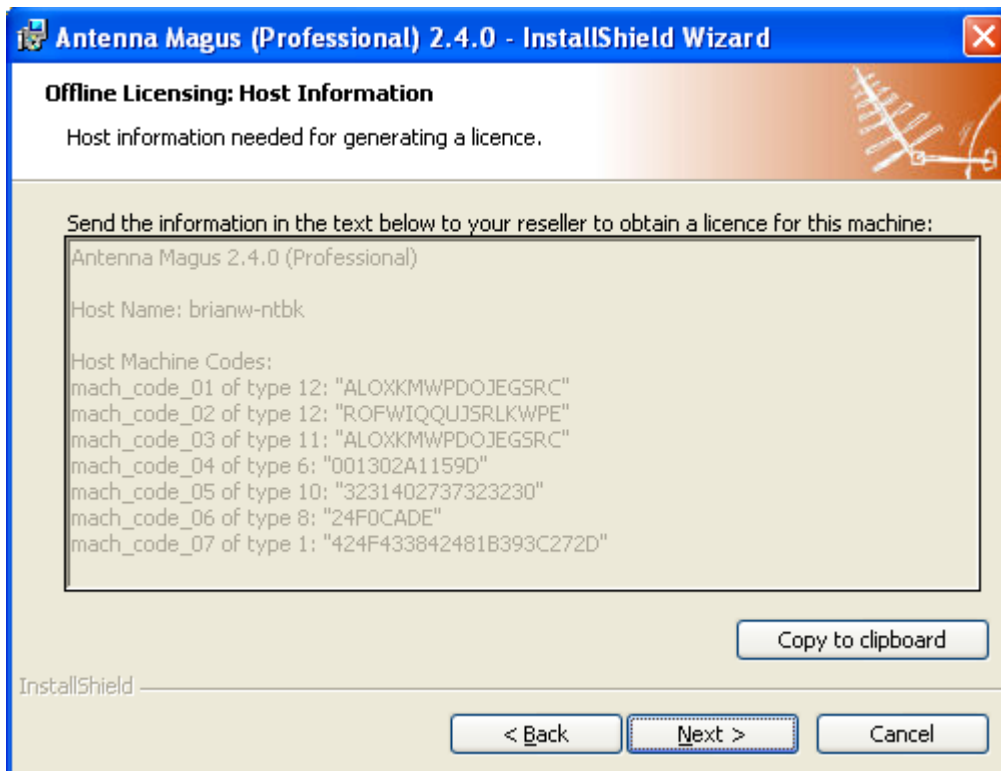
The Antenna Magus installation requires an internet connection so that it can retrieve a licence by communicating with the Antenna Magus Licence server over the internet.

This section is only applicable if a node-locked licence is being used and:

1. The target computer does not have an internet connection
2. If you encounter problems with the automatic installation
3. If your security policy does not allow the installation program to communicate with the Antenna Magus licence server.

The off line version of the .NET 3.5 SP1 installation is available on the Antenna Magus DVD or from Microsoft (at <http://www.microsoft.com/downloads/details.aspx?FamilyId=AB99342F-5D1A-413D-8319-81DA479AB0D7&displaylang=en>). If you prefer using a DVD, or are unable to download, please ask your reseller for a copy.

To install without communication with the Antenna Magus licence server, run the installation executable, and follow the on screen prompts until you are asked whether you want to retrieve your licence automatically or manually. Select the 'Manually retrieve a licence for node-locked installation' option. The installer will display a text box that contains machine codes. This text may be copied to the clipboard by clicking the 'Copy to clipboard' button and must be sent to your reseller. After sending the text, you must wait for your reseller to provide you with a file named 'secmagus.dat' which you must supply to the installer before it can complete the installation.



Note that automatic licence retrieval must be disabled in the Antenna Magus Settings dialog should you wish to prevent Antenna Magus from updating your license automatically after installation. (See the FAQ for a detailed explanation of the Antenna Magus settings.)

Floating (network) licence installation of Antenna Magus

If a floating licence has been purchased, then Antenna Magus may be installed on a number of machines that are connected to the same local area network. In this case, though Antenna Magus may be installed on many machines, only a limited number of machines may have Antenna Magus open concurrently up to a maximum of the number of seats indicated in the floating licence.

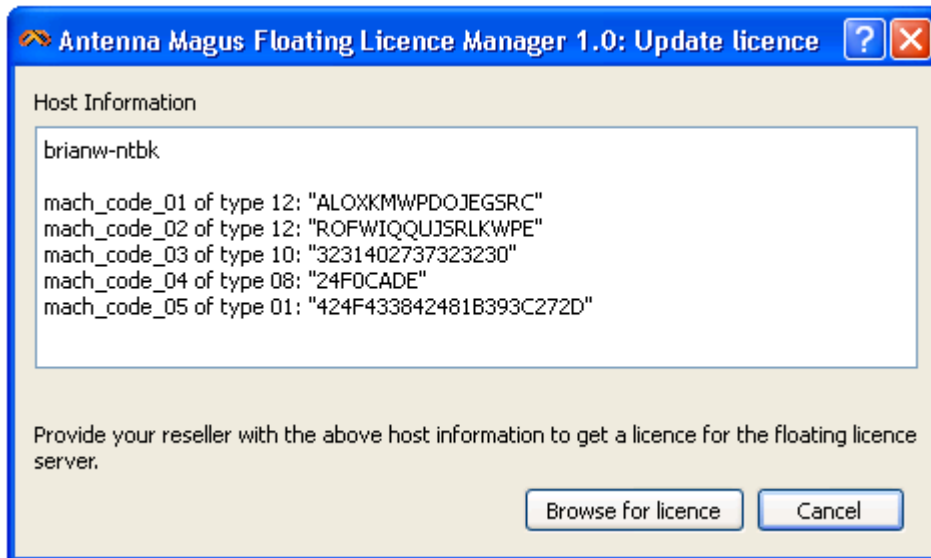
Installing the Antenna Magus floating licence manager

The Antenna Magus floating licence manager must be installed on a machine that is connected to the local area network, and which can be accessed through a communications port by other machines on the network. A service will be run on this machine that will administer the licencing of all other machines on the network, providing licencing information as required for Antenna Magus to be run.

The Antenna Magus floating licence manager must be installed using a separate installation to the Antenna Magus installation. The file 'AntennaMagusLM.msi' can be downloaded from the Antenna Magus website, or found on the Antenna Magus DVD. The installation of the floating license manager does not require the .NET framework to be installed on the server.

To install the Antenna Magus floating licence manager, execute the installer *.msi and follow the prompts. After installation, the Antenna Magus Floating licence manager can be launched.

The generation of a licence for the floating licence server must be done by sending the host information of the server to your reseller. To obtain the host information, start up the licence manager, and press the “Update...” button. The information to send is shown on the dialog.

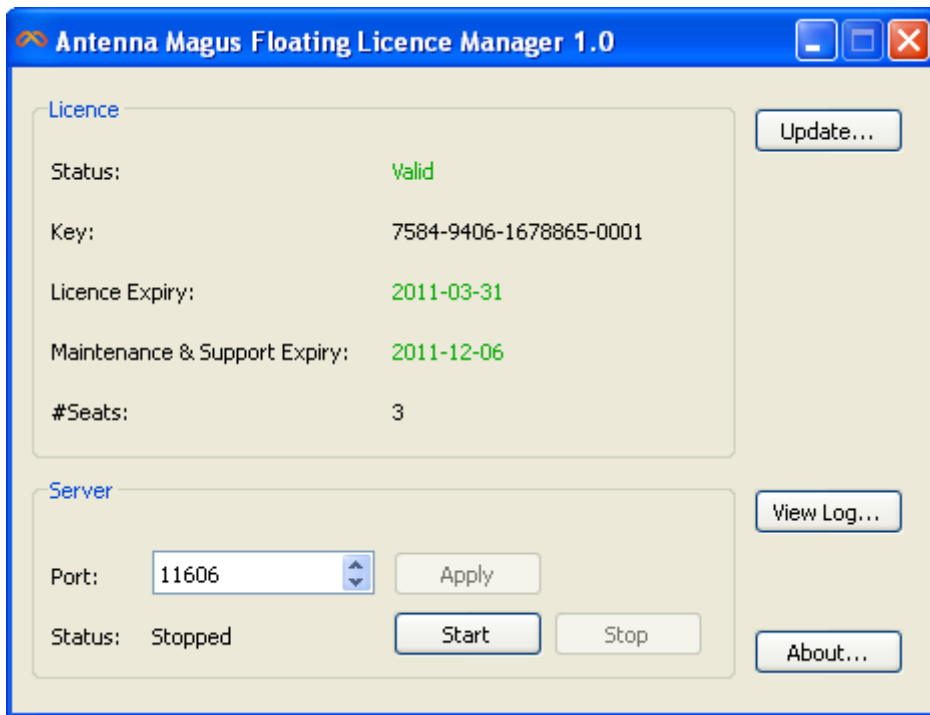


Your reseller will provide a floating licence server licence file based on the floating licence host machine information. The Antenna Magus floating licence manager should be pointed to this licence file using the ‘Browse for licence’ button on the ‘Update licence’ window. If the provided file is valid, then the information about the floating licence options will be displayed in the Antenna Magus floating licence manager application window as shown below.

The floating licence service may be started and stopped and the port that the service is to communicate with client machines on may be changed at any time through the Antenna Magus floating licence manager application window. A log of all activity on the floating licence network can also be accessed through the Antenna Magus floating licence manager application.

Once the floating licence service has been started, the Antenna Magus floating licence manager application may be closed and the floating licence service will continue to run on the machine.

NOTE: Depending on the operating system configuration on the floating licence server host machine, it may be necessary to open up the selected port for Antenna Magus floating licence communication in the machines firewall or security software.



Installing Antenna Magus on a client machine in a floating licence network

In order to install Antenna Magus for use with a floating licence option, the floating licence server must already be installed and started on the floating licence host machine (as discussed in the next section) and the machine must have local area network connectivity to the floating licence host machine during the installation process.

To complete the installation of Antenna Magus on a floating licence client machine, run the installation executable and follow the prompts. On the licencing mechanism step, select the 'Use a floating licence server on my network' option. When prompted to do so, insert the host-name of the floating licence host machine, and the port on which the floating licence service is running (this can be changed on the floating licence manager application as discussed below).

Allow the installation to complete. Antenna Magus will now contact the floating licence host for licencing information at startup and while running and will indicate an error if the communication fails or if the licence host is stopped.

NOTE: depending on the permissions configuration of the machine, it may be necessary for an exclusion to be added to your firewall or security administration tools to allow communication on the chosen port between the floating licence host machine and the client machines.

Installing an update of Antenna Magus

Updates for Antenna Magus are available from one version to the next. These updates can be downloaded from the website (www.antennamagus.com). If you have missed an update, you must either install the missing update(s) before installing the latest one, or uninstall Antenna Magus and re-install using the latest full installation.

If you are connected to the internet, and your maintenance and support contract is paid up, the update process is unlikely to encounter problems. If you encounter any problems, please contact your reseller.

If you are not connected to the internet, it may not be possible for the installation to check the status of your maintenance and support contract. If the installation reports that your contract is out of date, and you believe this to be a mistake, you should contact your reseller for an updated licence file. Once you have received and correctly installed your licence file, the update installation should complete.

On a network using a floating licence system, the Antenna Magus floating licence manager may periodically need to be reinstalled. An error message will be given when running Antenna Magus on a floating licence client machine indicating that the floating licence manager should be updated. A new version of the Antenna Magus floating licence manager can be downloaded from the Antenna Magus website (www.antennamagus.com) and installed.

The floating licence service of the existing Antenna Magus floating licence manager application should be stopped before the new manager is installed.

Moving a licence to a new machine

In the event that you need to move your Antenna Magus installation to a new computer, you need to notify your reseller. Once your reseller has indicated that you may proceed with the intended move, you can install in the normal way. Note that Antenna Magus will stop working on the machine where it was previously installed.

Periodic updates of your licence

For security reasons, your Antenna Magus licence will get stale from time to time. When this happens, Antenna Magus will attempt to get a new licence from the Antenna Magus server. Should this process fail (because you are not connected to the internet or because you have opted out of the automatic checking mechanism), you will need to contact your reseller for an updated licence. Antenna Magus will inform you that you need a new licence 2 weeks before the expiry of your current licence.

What is an MD5 Checksum?

Every now and then, for some or other reason, errors occur during file downloads, resulting in corrupt files. These errors are not picked up by the download manager and are often a source of frustration. MD5 Checksums are used as a quick way to verify whether or not this has happened. We calculate the MD5 checksum of the file on our server and publish it on the internet. After you have

downloaded, you are encouraged to calculate the checksum and compare it to the one on the website. If there is a difference in the checksum, you need to re-do the download. Note that if you have a local cache, it may return the corrupt file to you again!

For MS Windows, MD5 checksums are often built into popular tools like Total Commander. If you don't have this, some popular tools for generating MD5 checksums are available at:

<http://www.fastsum.com/>

<http://www.fourmilab.ch/md5/>

<http://www.toast442.org/md5/>

<http://www.pc-tools.net/win32/md5sums/>

Need more help?

If, after reading this guide, you are having trouble with the installation of Antenna Magus, please contact your reseller. If you are having difficulties installing the evaluation version, you can get the contact details of a reseller on www.antennamagus.com.